

## Enphase Q Cable and Accessories

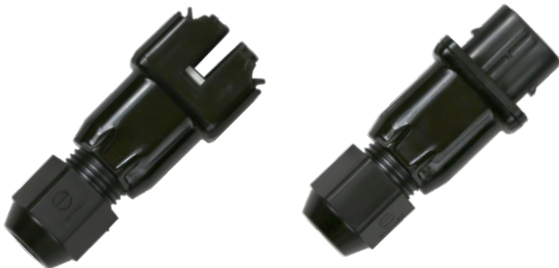
The **Enphase Q Cable™** and accessories are part of the sixth generation Enphase IQ System™. These products provide simplicity, reliability, and faster installation times.

---



### Enphase Q Cable

- Two-wire, double-insulated Enphase Q Cable is 50% lighter than the previous generation Enphase cable
- Four-wire (three-phase) option also available
- New cable numbering and plug and play connectors speed up installation and simplify wire management
- Link connectors eliminate cable waste



### Field-Wireable Connectors

- Easily connect Q cables on the roof without complex wiring
- Make connections from any open connector and center feed any section of cable within branch limits
- Available in male and female connector types

# Enphase Q Cable Accessories

## Q CABLE SPECIFICATIONS

Voltage rating	600V (connector rating up to 250 V)
Cable temperature rating	90° C wet/dry
UV exposure rating	EN ISO 492-2
Environmental protection rating	IEC 60529 IP67
Compliance	RoHS, OIL RES I, CE, UV resistant
Cable insulator rating	H07BQ-F
Flame rating	IEC 60332-1-2

## Q CABLE TYPES / ORDERING OPTIONS

Model Number	Max Nominal Voltage	Ampacity Rating	Connector Spacing	PV Module Orientation	Connector Count per Box
Q-25-10-240 (single-phase)	250 VAC	25 A	1.3 m	Portrait	240
Q-25-17-240 (single-phase)	250 VAC	25 A	2.0 m	Landscape (60-cell)	240
Q-25-20-200 (single-phase)	250 VAC	25 A	2.3 m	Landscape (72-cell)	200
Q-25-10-3P-200 (three-phase)	250 VAC	25 A	1.3 m	Portrait	200
Q-25-17-3P-160 (three-phase)	250 VAC	25 A	2.0 m	Landscape (60-cell)	160
Q-25-20-3P-160 (three-phase)	250 VAC	25 A	2.3 m	Landscape (72-cell)	160

## ENPHASE Q CABLE ACCESSORIES

Name	Model Number	Description
Raw Q Cable (single-phase)	Q-25-RAW-300	300 meters cable with no connectors
Raw Q Cable (three-phase)	Q-25-RAW-3P-300	300 meters cable with no connectors
Field-wireable connector (male)	Q-CONN-R-10M	Make connections using single-phase cable
Field-wireable connector (male)	Q-CONN-3P-10M	Make connections using three-phase cable
Field-wireable connector (female)	Q-CONN-R-10F	Make connections from any Q Cable (single-phase) open connector
Field-wireable connector (female)	Q-CONN-3P-10F	Make connections from any Q Cable (three-phase) open connector
Cable Clip	ET-CLIP-100	Used to fasten cabling to the racking or to secure looped cabling
Disconnect tool	Q-DISC-10	Disconnect tool for Q Cable connectors, DC connectors, and AC module mount
Disconnect tool	Q-DISC-3P-10	Disconnect tool for three-phase Field wireable connectors
Q Cable sealing caps (female)	Q-SEAL-10	One needed to cover each unused connector on the cabling
Terminator (single-phase)	Q-TERM-R-10	Terminator cap for unused single-phase cable ends
Terminator (three-phase)	Q-TERM-3P-10	Terminator cap for unused three-phase cable ends
Replacement DC Adaptor (MC4)	Q-DCC-2-INT	DC adaptor to MC4 (max voltage 100 VDC)



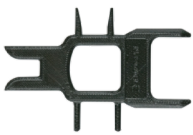
### TERMINATOR

Terminator cap for unused cable ends, sold in packs of ten (Q-TERM-R-10 / Q-TERM-3P-10))



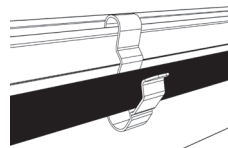
### SEALING CAPS

Sealing caps for unused cable connections, sold in packs of ten (Q-SEAL-10)



### DISCONNECT TOOL

Plan to use at least one per installation, sold in packs of ten (Q-DISC-10)  
Three-phase model (Q-DISC-3P-10)



### CABLE CLIP

Used to fasten cabling to the racking or to secure looped cabling, sold in packs of one hundred (ET-CLIP-100)

To learn more about Enphase offerings, visit [enphase.com/uk](https://enphase.com/uk)